

**Enchanting Stars 53" x 53" \*\*\*\*\***

**You will find the numbers of the colors and the fabric schedules in the text. But how do they work?**

In addition to the 3 different black, white and striped fabric, we will work with 24 beautiful and bright colors: the fabric 1 up to and including 24. The backside of the pattern is also your color card and I will refer to these numbers 1-24 or to fabric 25, 26, 27, 28 or 29 throughout the instructions.

**How to cut the fabric pieces and the cutting schedules**

We always work with a lot of different colors in our spikes, stars and flying geese. It is easier to make piles of fabric and cut the pieces that you need simultaneously instead of cutting every piece separately. Of course you will find detailed cutting schedules in every chapter in the text. But I also have made cutting instructions to cut your fabric pieces in a very fast and easy way.

If you take a look at the cutting schedule on to the next pages you will see three different colors.

**These three colors represent the size of the three different fabric strips that you need:**

1. the soft pink color is a 2" x 44" width strip;
2. the yellow represent a 2½" x 44" width strip; and
3. the blue strip is 3½" x 44" width.

You need the 3 different strips in each of our 24 colors:

Cut from fabric 1: one strip of 2" x 44" (pink), one strip of 2½" x 44" (yellow) and one strip of 3½" x 44" (blue).

Cut from fabric 2: one strip of 2" x 44" (pink), one strip of 2½" x 44" (yellow) and one strip of 3½" x 44" (blue).

Cut from fabric 3: one strip of 2" x 44" (pink), one strip of 2½" x 44" (yellow) and one strip of 3½" x 44" (blue). etc. etc. etc.

2½"	2½"	2"	1½"	1¾"	2½"	3½"	3"	2"	2½"	2"	2"	2½"	2"	2"	2½"
x	x	x	x	x	x	x	x	x	x	x	x	x	x	x	x
3¼"	4½"	2½"	2½"	3½"	3½"	4½"	4½"	2¼"	2½"	2½"	2"	3"	2¼"	2½"	2½"
<b>A1</b>	<b>A1</b>	<b>A3</b>	<b>A3</b>	<b>A4</b>	<b>A4</b>	<b>A11</b>	<b>A11</b>	<b>B9</b>	<b>B9</b>	<b>B9</b>	<b>B8</b>	<b>B8</b>	<b>B8</b>	<b>B8</b>	<b>B8</b>

The first two horizontal rows are the size of the pieces and the name/number of the piece: A1, B9, F45 etc. etc.

	2½" x 3¼"	2½" x 4½"	2" x 2½"	1½" x 2½"
Fabric	<b>A1</b>	<b>A1</b>	<b>A3</b>	<b>A3</b>
1	X	X	X	
2	X	X	X	
3	X	X	X	
4	X	X	X	
5	X	X		X
6	X	X		X

The first vertical row represents the fabric colors: 1 up to and including 24 and finally all the vertical rows with the crosses are the pieces you need in each color.

Take for example A1: required size of the piece:  $2\frac{1}{2}$ " x  $3\frac{1}{4}$ ". The second piece of A1: in the required size:  $2\frac{1}{2}$ " x  $4\frac{1}{2}$ ".

The color in this schedule is blue: take the $3\frac{1}{2}$ " x 44" width strip.	The color in this schedule is yellow: take the $2\frac{1}{2}$ " x 44" width strip
Place the first 6 fabrics on top of each other: 1, 2, 3, 4, 5 and 6.	Place the first 6 fabrics on top of each other: 1, 2, 3, 4, 5 & 6.
Cut the desired width that is required: $2\frac{1}{2}$ " x $3\frac{1}{4}$ ".	Cut the desired width that is required: $2\frac{1}{2}$ " x $4\frac{1}{2}$ ".
Cut the remaining colors of A1: 7 up to and including 18.	Cut the remaining colors of A1: 7 and 8 and 15 up to and incl. 24.

Put the pieces into zip lock bags and write the number of the piece on the outside of the bag if you also cut the other pieces of part A: A3, A4 and A11.

#### Example: fabric and foundation schedule A1

triangle flying geese	Fabric triangle flying geese		outside flying geese	Fabric outside flying geese
Foundation point	$2\frac{1}{2}$ " x $3\frac{1}{4}$ "		Foundation point	$2\frac{1}{2}$ " x $4\frac{1}{2}$ "
1	1		2 & 3	15
4	2		5 & 6	16
7	3		8 & 9	17
10	4		11 & 12	18
13	5		14 & 15	19

If you have cut all the pieces, you can start with A1.

Divide the two different fabric sizes:  $2\frac{1}{2}$ " x  $3\frac{1}{4}$ " &  $2\frac{1}{2}$ " x  $4\frac{1}{2}$ " in two different piles and place the fabrics of A1 according to the fabric and foundation schedule on top of each other. You will find in every chapter of Enchanting Stars the fabric and foundation schedules that you need for that specific part.

You start with the  $2\frac{1}{2}$ " x  $3\frac{1}{4}$ " of fabric 1 for foundation point 1. The  $2\frac{1}{2}$ " x  $4\frac{1}{2}$ " of fabric 15 for the foundation points 2 and 3, the  $2\frac{1}{2}$ " x  $3\frac{1}{4}$ " of fabric 2 for foundation point 4 and the  $2\frac{1}{2}$ " x  $4\frac{1}{2}$ " of fabric 16 for the foundation points 5 and 6. The  $2\frac{1}{2}$ " x  $3\frac{1}{4}$ " of fabric 3 for foundation point 7 and for the foundation points 8 and 9 you use the  $2\frac{1}{2}$ " x  $4\frac{1}{2}$ " of fabric 17 etc. etc.

Turn the pile up side down and you can start with the right fabric piece on top. This makes it very fast and easy and you can start!

**I also have made cutting schedules for the eleven stars. The stars are always made of the fabrics: 4, 5, 7, 10, 12, 16, 19 and 23. For the stars you cut 2 strips of  $2\frac{1}{2}$ " x 44" in these eight colors. Fabric 29 and sometimes fabric 26 are the base of the eleven stars.**

	2½"	2½"	2"	1½"	1¾"	2½"	3½"	3"	2"	2½"	2"	2"	2½"	2"	2"	2½"
	x	x	x	x	x	x	x	x	x	x	x	x	x	x	x	x
	3¼"	4½"	2½"	2½"	3½"	3½"	4½"	4½"	2¼"	2½"	2½"	2"	3"	2¼"	2½"	2½"
Fabric	A1	A1	A3	A3	A4	A4	A11	A11	B9	B9	B9	B8	B8	B8	B8	B8
1	X	X	X		X		X		X	X	X	X			X	
2	X	X	X		X		X		X	X	X	X			X	
3	X	X	X		X		X		X	X	X	X	X		X	
4	X	X	X		X		X		X	X	X	X	X		X	
5	X	X		X		X	X		X	X	X	X	X		X	
6	X	X		X		X	X		X		X	X	X		X	
7	X	X		X		X	X		X		X	X	X		X	
8	X	X		X		X		X	X	X	X	X	X		X	
9	X			X		X		X	X	X	X		X	X	X	
10	X			X		X		X	X	X	X		X		X	
11	X		X	X				X	X	X	X		X		X	
12	X		X	X				X	X	X	X		X		X	
13	X		X	X				X	X	X					X	X
14	X		X	X				X	X	X					X	
15	X	X	X	X				X	X	X	X			X	X	
16	X	X	X	X				X	X	X	X			X	X	
17	X	X	X	X				X	X	X	X			X	X	
18	X	X	X	X				X	X	X	X			X	X	
19		X	X	X					X	X	X			X	X	
20		X	X	X					X	X	X			X	X	
21		X	X	X			X		X	X	X			X	X	
22		X	X		X		X		X	X	X			X	X	
23		X	X		X		X			X	X	X		X	X	
24		X	X		X		X			X	X	X		X	X	

Schedules of the first 2 stars: A6 and B10

	1½" x 2½"	2¼" x 3¾"		1½" x 2¾"	2" x 3¾"
Fabric	A6	A6		B10	B10
4	X	X		X	X
5	X	X		X	X
7	X	X		X	X
10	X	X		X	X

12	X	X		X	X
16	X	X		X	X
19	X	X		X	X
23	X	X		X	X

## General points of attention in Enchanting Stars \*\*\*\*\*

In these General Instructions I will not only give you all kind of tips and tricks, but also detailed instructions how the fabric- and cutting schedules work, how to make a beautiful flat star, how to work with the double seam allowances that you will find on several pattern parts in the pattern, but also how to assemble the pieces together.

In order to avoid a constant repeating of all these methods I will refer to these General Instructions.

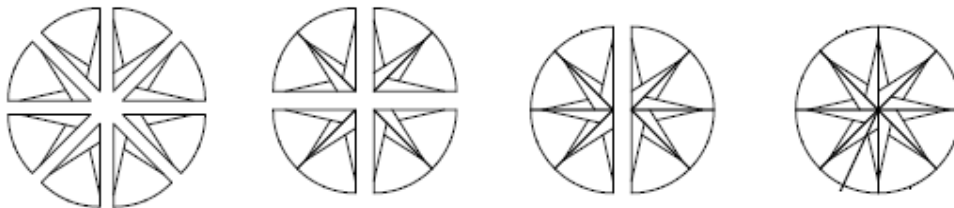
### 1) Foundation piecing and the DVD

We decided not to explain the paper piecing technique in this pattern. If you choose a pattern of this difficulty we believe that you have a certain level of foundation piecing. If you have not.... you can find many books with detailed instructions on how to start with foundation piecing and get addicted to it☺. We also offer a 2 hour, English spoken instruction DVD: "How to make a BeColourful quilt". This DVD offers a detailed explanation of all the techniques that you will need for Enchanting. If you would like to practice your techniques I advise you to start with making the Happiness quilt, this is the small quilt that I demonstrate on the DVD. This DVD is not a part of this pattern and has to be purchased separately.

The numbers and the crosses are VERY important in this pattern. Don't forget to trace them from the design and to put them on your fabric. This can be done with a fabric marker or a small cut in the seam allowance of the fabric. When you see a little mark across the line, you have to stitch up to this marking, you can continue only then, when you have attached that part which crosses this seam. It is like "traffic" coming from the right.

### 2) How to make a beautiful flat star

Place the eight star points, with the right side facing up, clockwise and in the correct number sequence in front of you: 1, 2, 3, 4, 5, 6, 7 & 8. But pay attention: sometimes the star points run into the border fabric: C12, E32, E33 and G45. Read the special assembling steps, which are written in every chapter, before you stitch the star points together as I described:



- Stitch 1 to 2, 3 to 4, 5 to 6 and 7 to 8. Press the seams open and cut the small "ears" away. You have 4 x a quarter.
- Stitch 1-2 to 3-4 and 5-6 to 7-8. Press the seams open. You now have 2 star halves.

Pin the center of the 2 star halves exactly on top of each other. When you are satisfied, you stitch the center of the star with some tiny stitches to each other. Pin the rest of the star halves together and stitch the complete seam. Press the seam open.

### 3) How to assemble the stars in the background pieces

Take the small Clover Appliqué pins (which I advised in the material list). These small pins are extremely suitable to pin the stars in the curves. They are not only very sharp, but because of their small size they give maximum flexibility to the curves of the star points. Every star point is in fact a mark and will touch the markings on the other piece.

Use the cover picture of Enchanting Stars to place the star in the right position in the circle.

- Pin 4 seams of the star with the small pins on: North, East, South and West.
- Carefully place some small stitches with the sewing machine on top of these 4 pins. Remove the 4 pins.

- Pin the remaining 4 seams of the star on: North East, South East, South West and North West.
- Again, carefully place some small stitches with the sewing machine on top of these 4 pins.
- You can now also remove those pins. You have attached the star at 8 different points and cannot be moved anymore.

Ease in the remaining fabric with the small Clover Appliqué pins and stitch (very controlled) the star in the curve.

Press the fabric lightly.

#### **4) Make your stars, flying geese and spikes according to the paper foundation method.**

Make your stars, flying geese and spikes according to the paper foundation method. Make sure your fabric extends beyond the cutting line so you will have a smooth edge when trimming, but pay attention to the points so they do not go into the seam allowance on both the outside and inside. Also check each seam before trimming to be sure the point stops in the correct place. When you have finished the stars, flying geese and spikes, you press the fabric lightly and cut any access fabric, using your ruler and rotary cutter, but do this in such a way that you will keep a ¼" seam allowance around the piece. Transfer the marks and the number of the piece (for example A1 or C12, or D31) onto the fabric and remove the foundation paper.

#### **5) Remove the foundation paper....?**

I know that this might seem strange to you, but you don't need foundation paper in the seams. You only need the foundation paper to make the piece, not to assemble it. In fact, it makes it so much harder when you work with curves and you have foundation paper in the seams. You need the bias and the flexibility of the piece and you will notice that this all makes it easier when you have to sew all the finished parts together.

#### **6) Design Wall**

If you have removed the foundation paper, you pin the pieces on to your design wall, you take a step back and you will be very happy with this result. If you don't have a design wall.... Let's make one!

Take a piece of soft board and drape a piece of white flannel fabric over the front, fold the flannel to the back and staple the fabric to the back of the soft board and you have a beautiful easy to make design wall and you can pin and drape your pieces and fabrics on it....

#### **7) The pattern parts**

All Flying geese, spikes and stars are made according to the paper foundation method.

But during the sewing, when using the paper foundation technique, you automatically mirror these flying geese, spikes and stars! That means of course that our pattern parts have to be mirrored as well....We do this as follows: fold the fabric open, we work with a single piece of fabric because every piece is unique, and you place the pattern parts, always on the wrong side of the fabric!

#### **8) The outside border pieces are made of fabric 26**

The outside border pieces are always made from fabric 26. We cut 6 strips of 5" x 44" WOF, and use this for the border pattern parts. The border is not only a border but we have to paper piece the striped sashing (fabric 28) to the border as well before we can add the border onto the quilt. But pay attention: sometimes it seems that the little striped sashing goes "under" the star points.

Cut for the striped sashing also 6 strips of 1½" x 44" of fabric 28 to use in the border. The only thing that is important with the striped fabric is to cut the fabric extremely straight in order to avoid slanting sashings. You measure the length of the pattern part, on the side where you must sew fabric 28 and add 1" extra seam on both outsides of the small strip. Stitch the border part

and the sashing together according to the paper foundation method. Press the fabric and trim the extra fabric around the piece, with a ruler and a rotary cutter. But do this in such a way that you will be left with a nice sharp seam all around.

### 9) Special instruction for the pattern parts with a double seam allowance

I use Part A as an example to explain how the double seam allowance works. When you cut the pattern parts A2 and A7-a from the templates, you will notice that these parts have a different seam allowance than the normal  $\frac{1}{4}$ ".

I noticed that no matter how much effort I put in some pattern parts, or curves, circles and arches, I am always running out of fabric on the outside of these kind of pieces when I finished the part.

I have solved the problem by adding an extra  $\frac{1}{4}$ " seam allowance on the outside of the piece. The final result will be so much better than without that extra  $\frac{1}{4}$ " fabric. But how does it work?

Cut the pattern parts A5, A7-a, A7-b and A7-c from the template. Place them on the wrong side, but of course straight of grain, of the selected, single fabric and cut the fabric parts. All border parts have a double seam allowance, but they are also paper piece parts. You trim the extra  $\frac{1}{4}$ " on the outside border parts at the end when the quilt is quilted and you must square the quilt.

- Trace A2 with freezer paper from the template. Iron part A2 onto the right fabric. You will notice that on the inside curve of A2 you have a normal seam allowance of a  $\frac{1}{4}$ ". But on the outside curve of A2 and on the outside part of A7-a you will have a double seam allowance: 2 x a  $\frac{1}{4}$ ".
- Cut right on top of the outside lines of the freezer paper and transfer the small markings onto the fabric. These markings are very important when you have to assemble the pieces together.
- Gently peel off the freezer paper from the fabric.

Paper piece the little striped sashing onto the border part A7-a. Press A7-a and trim the extra fabric **around** the template.

**Remember:** you trim the extra  $\frac{1}{4}$ " on the outside border parts at the end when the quilt is quilted and you square the quilt.

Transfer the marks on to the fabric and remove the foundation paper gently from the fabric. Assemble all the pieces together.

**Step 1:** Stitch A2 to A3.

Take the freezer paper part of A2 that you have made.

Cut from the **freezer paper: part A2**, the  $\frac{1}{4}$ " seam allowance from the curved inside.

Cut from the **freezer paper: part A2**, the second  $\frac{1}{4}$ " seam allowance from the **outside** of the piece.

Iron the freezer paper back on to the fabric piece: the freezer paper is attached to the seam allowance between parts A2/A3.

On the outside of the piece, where you just trimmed the second  $\frac{1}{4}$ " seam allowance from the freezer paper, you will see the extra fabric. You will also notice that the extra  $\frac{1}{4}$ " seam allowance is not a perfect  $\frac{1}{4}$ " seam allowance anymore.

Trim the extra fabric and reduce the seam allowance to a perfect  $\frac{1}{4}$ ". Transfer the markings on to the fabric and remove the freezer paper gently from the fabric.

**Step 2:** Stitch A4 to combination A2/A3.

**Step 3:** Stitch the star A6 in the circle, which you have after step 1 and 2..... etc. etc.

### 10) The Y seam or miter angle

The four 45° corner parts have a Y-seam. A Y-seam only implies that you do not stitch the  $\frac{1}{4}$ " seam allowance in that corner.

At the four corners where this is the case I have indicated this Y-seam by drawing a tiny black dot.

### 11) Seam ripper and Pressing

Use your seam ripper not only to remove your little mistakes, but you can also push the fabric as far as possible under the needle of the sewing machine and you can also use the tip of the seam ripper to maneuver the fabric a little better in place when you stitch a curve. Press every piece that you have made. But be gentle if you press, we work with a lot of curves and slanting seams and we don't want to change or stretch the look of the piece. When I press my pieces, the foundation paper is still in the piece and I always use a little bit of steam. The final result is, I think, more flat.

### 12) Walking foot or upper feeding transport or IDT (integrated Dual Feed Transportation)

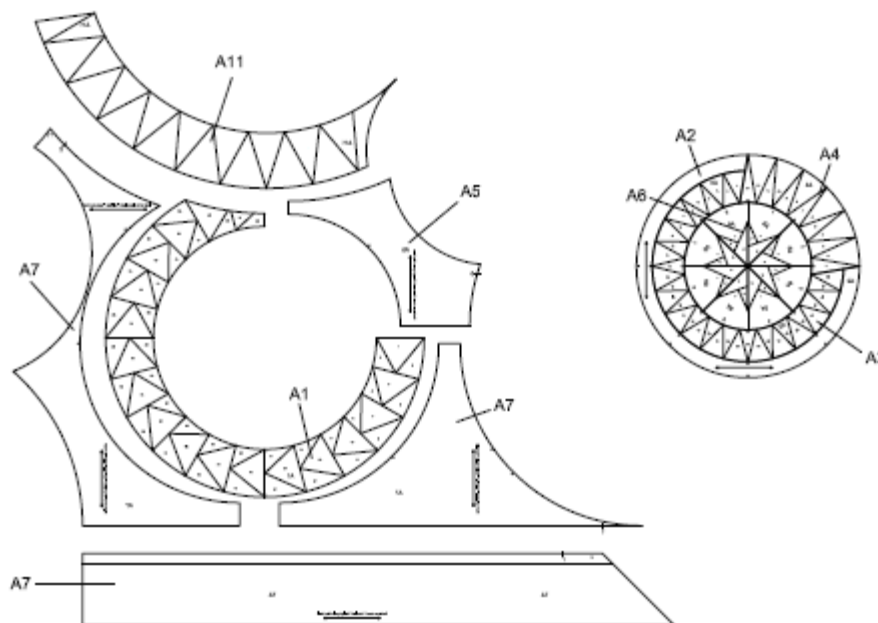
When your sewing machine has a walking foot, upper feeding transport or IDT (integrated Dual Feed Transportation) use it! You will notice that the fabrics remain much better in place and this will improve the end result substantially!

Use sharp scissors, sewing needles and a new blade in your rotary cutter.

The choice of fabric that I have used can be a guideline. Of course you are free in the choice of your own fabrics and color and, that is more important, use your own fantasy! The seam allowance of 1/4" for the entire quilt is already drawn around all parts.

Always pin the asterisks/markings on top each other and spread out the remaining fabric in between.

## Enchanting Stars \*\*\*\*\* 53" x 53"



### Fabric and cutting schedule for A1

For the triangle of the flying geese A1 cut 1 piece of: 2 1/2" x 3 1/4" from the fabrics: 1, 2, 3, 4, 5, 6, 7, 8, 9, 10, 11, 12, 13, 14, 15, 16, 17, and 18.

For the outside of the flying geese A1 cut 1 piece of: 2 1/2" x 4 1/2" from the fabrics: 15, 16, 17, 18, 19, 20, 21, 22, 23, 24, 1, 2, 3, 4, 5, 6, 7 & 8. These fabric pieces are slightly larger than needed, so you can make both sides of the flying geese from one piece of fabric.

### Fabric and foundation schedule A1

Triangle flying geese	Fabric triangle flying geese	Outside flying geese	Fabric outside flying geese	Triangle flying geese	Fabric triangle flying geese	Outside flying geese	Fabric outside flying geese
-----------------------	------------------------------	----------------------	-----------------------------	-----------------------	------------------------------	----------------------	-----------------------------



Foundation point	2½" x 3¼"		Foundation point	2½" x 4½"		Foundation point	2½" x 3¼"		Foundation point	2½" x 4½"
1	1		2 & 3	15		28	10		29 & 30	24
4	2		5 & 6	16		31	11		32 & 33	1
7	3		8 & 9	17		34	12		35 & 36	2
10	4		11 & 12	18		37	13		38 & 39	3
13	5		14 & 15	19		40	14		41 & 42	4
16	6		17 & 18	20		43	15		44 & 45	5
19	7		20 & 21	21		46	16		47 & 48	6
22	8		23 & 24	22		49	17		50	7
25	9		26 & 27	23		51	18		52	8

Place the fabric pieces of A1 according to the fabric and foundation schedule on top of each other. **Divide the two different fabric sizes:** 2½" x 3¼" & 2½" x 4½" in two different piles. You start with the 2½" x 3¼" of fabric 1 for foundation point 1.

The 2½" x 4½" of fabric 15 for the foundation points 2 and 3, the 2½" x 3¼" of fabric 2 for foundation point 4, and the 2½" x 4½" of fabric 16 for the foundation points 5 and 6. The 2½" x 3¼" of fabric 3 for foundation point 7 and for the foundation points 8 and 9 you use the 2½" x 4½" of fabric 17 etc. etc. Turn the pile up side down and you can start with the right fabric piece on top. Cut part A1 from the template. Stitch the flying geese according to the paper foundation method, start with foundation point number 1-2 and make sure fabric 1 is on top. Press and trim the fabrics **as explained in the General Points of Attention**

#### Fabric and cutting schedule for part A4

<b>For the odd foundation points of A4 cut 1 piece of:</b> 1¾" x 3½" from the fabrics: 1, 2, 3, 4, 22, 23 and 24.
<b>For the even foundation points of A4 cut 1 piece of:</b> 2½" x 3½" from the fabrics: 5, 6, 7, 8, 9 and 10.

Place the fabric pieces of A4 according to the fabric and foundation schedule on top of each other.

You start with the 1¾" x 3½" of fabric 4 for foundation point 1. The 2½" x 3½" of fabric 10 for foundation point 2, the 1¾" x 3½" of fabric 3 for foundation point 3 and the 2½" x 3½" of fabric 9 for foundation point 4. The 1¾" x 3½" of fabric 2 for foundation point 5 and for foundation point 6 you use the 2½" x 3½" of fabric 8 etc. etc. Turn the pile up side down and you can start with the right fabric piece on top.

Cut part A4 from the template. Stitch the spikes according to the paper foundation method, start with foundation point number 1-2 and make sure fabric 4 is on top. Press and trim the fabrics **as explained in the General Points of Attention.**

#### Fabric and foundation schedule A4

Foundation points	Fabric odd points	Fabric even points		Foundation points	Fabric odd points	Fabric even points
	1¾" x 3½"	2½" x 3½"			1¾" x 3½"	2½" x 3½"
1	4			8		7
2		10		9	24	

3	3		10		6
4		9	11	23	
5	2		12		5
6		8	13	22	
7	1				

### Fabric and cutting schedule for A3

**For the odd foundation points of A3 cut 1 piece of: 2" x 2½", from the fabrics: 1, 2, 3, 4, 11, 12, 13, 14, 15, 16, 17, 18, 19, 20, 21, 22, 23 and 24.**

**For the even foundation points of A3 cut 1 piece of: 1½" x 2½" from the fabrics: 5, 6, 7, 8, 9, 10, 11, 12, 13, 14, 15, 16, 17, 18, 19, 20 and 21.**

Place the fabric pieces of A3 according to the fabric and foundation schedule on top of each other.

You start with the 2" x 2½" of fabric 4 for foundation point 1. The 1½" x 2½" of fabric 21 for foundation point 2, the 2" x 2½" of fabric 3 for foundation point 3 and the 1½" x 2½" of fabric 20 for foundation point 4. The 2" x 2½" of fabric 2 for foundation point 5 and for foundation point 6 you use the 1½" x 2½" of fabric 19 etc. etc. Turn the pile up side down and you can start with the right fabric piece on top. Cut part A3 from the template. Stitch the spikes according to the paper foundation method, start with foundation point number 1-2 and make sure fabric 4 is on top. Press and trim the fabrics **as explained in the General Points of Attention**.

### Fabric and foundation schedule A3

foundation points	fabric odd points	fabric even points	foundation points	fabric odd points	fabric even points	foundation points	fabric odd points	fabric even points
	2" x 2½"	1½" x 2½"		2" x 2½"	1½" x 2½"		2" x 2½"	1½" x 2½"
1	4		13	22		25	16	
2		21	14		15	26		9
3	3		15	21		27	15	
4		20	16		14	28		8
5	2		17	20		29	14	
6		19	18		13	30		7
7	1		19	19		31	13	
8		18	20		12	32		6
9	24		21	18		33	12	
10		17	22		11	34		5
11	23		23	17		35	11	
12		16	24		10			

### Fabric and cutting schedule for part A11

**For the outside curve of A11 cut 1 piece of: 3½" x 4½"** from the fabrics: 1, 2, 3, 4, 5, 6, 7, 21, 22, 23 and 24.

**For the inside curve of A11 cut 1 piece of: 3" x 4½"** from the fabrics: 8, 9, 10, 11, 12, 13, 14, 15, 16, 17 and 18.

### Fabric and foundation schedule A11

FP #	Fabric inside points	Fabric outside points	FP #	fabric outside points	fabric inside points	FP #	fabric outside points	fabric inside points
	3" x 4½"	3½" x 4½"		3½" x 4½"	3" x 4½"		3½" x 4½"	3" x 4½"
4	10		5	23		14		15
0		22	6		11	15	4	
1	9		7	24		16		16
2		21	8		12	17	5	
3	8		9	1		18		17
			10		13	19	6	
			11	2		20		18
			12		14	21	7	
			13	3				

Place the fabric pieces of A11 according to the fabric and foundation schedule on top of each other.

You start with the 3" x 4½", of fabric 10 for foundation point 4. The 3½" x 4½" of fabric 22 for foundation point 0, the 3" x 4½" of fabric 9 for foundation point 1 and the 3½" x 4½" of fabric 21 for foundation point 2. The 3" x 4½" of fabric 8 for foundation point 3 and for foundation point 5 you use the 3½" x 4½" of fabric 23, for foundation point 6 you use the piece 3" x 4½" of fabric 11, etc. etc. Turn the pile up side down and you can start with the right fabric piece on top.

Cut part A11 from the template. Stitch the spikes according to the paper foundation method, start with foundation point number 4-0 and make sure fabric 10 is on top. Press and trim the fabrics **as explained in the General Points of Attention**.

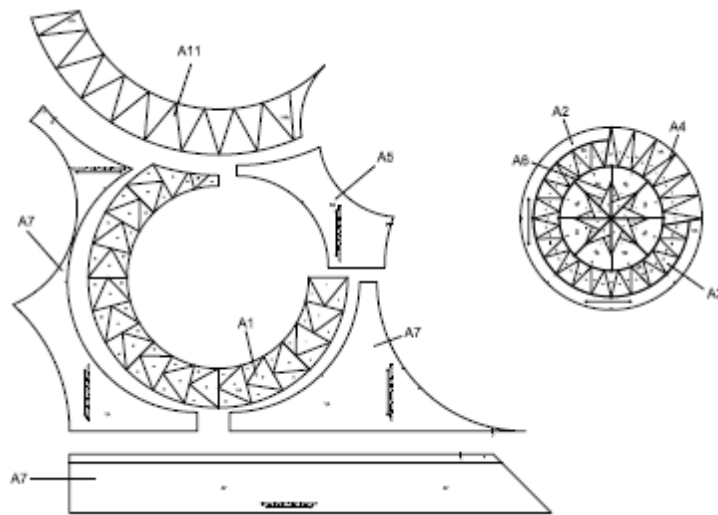
### Fabric and cutting schedule for the star: A6

	Point 1	Point 2	Point 3	Point 4	Point 5	Point 6	Point 7	Point 8
	fabric	fabric	fabric	fabric	fabric	fabric	fabric	fabric
Foundation point 1: Cut 1 strip of 3½" x 44" of fabric 29 Cut the strip into 8 pieces of 3" x 3½"	29	29	29	29	29	29	29	29
Foundation point 2: 1 piece of 1½" x 2½"	12	16	19	23	4	5	7	10
Foundation point 3: 1 piece of 2¼" x 3¾"	4	5	7	10	12	16	19	23

Cut the eight star points, part A6 from the template. Stitch each point according to the paper foundation method. Start with foundation point number 1-2 and make sure fabric 29 is on top. Press, trim and assemble the eight star points **as explained in the General Points of Attention**.

Part A2	Fabric 26: Trace with freezer paper from the template.
Part A5	Fabric 25
Part A7 A	Fabric 26 and the striped fabric 28.
Part A7 B	Fabric 25
Part A7 C	Fabric 25

Cut the pattern parts: A2, A5, A7-a, A7-b and A7-c from the templates and place, or iron (part A2), the pieces on the straight grain of the selected, single fabric. Assemble all the pieces, **as explained in the General Points of Attention**, together.



**Step 1:** Paper piece the striped fabric to A7-a.

**Step 2:** Stitch A2 to A3.

**Step 3:** Stitch A4 to combination A2/A3.

**Step 4:** Take a close look to the cover of Enchanting Stars, turn A6 in the right position and stitch the star in the circle.

**Step 5:** Stitch the small seam between A7-b and A7-c to each other and press the seam open.

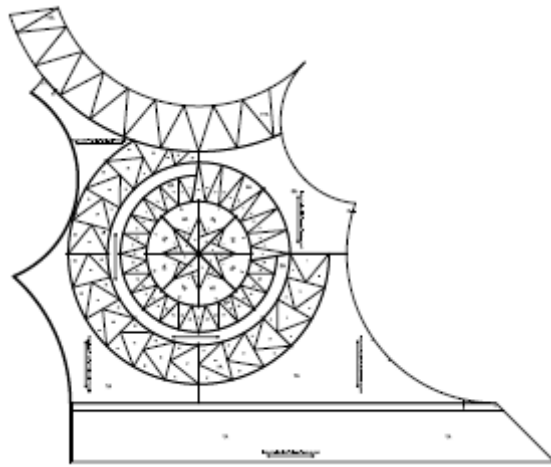
**Step 6:** Stitch A7-a to A7-b/A7-c up to number 1.

**Step 7:** Stitch A1 to A7-b and A7-c.

**Step 8:** Stitch A5 to A1 and A1/A7-c.

**Step 9:** Turn combination: A2/A3/A4/A6 in the right position in A5/A1 and stitch the entire center part in the open circle.

**Step 10:** Stitch A11 to the top of combination A5/A1/A7, up to number 2.



Part A